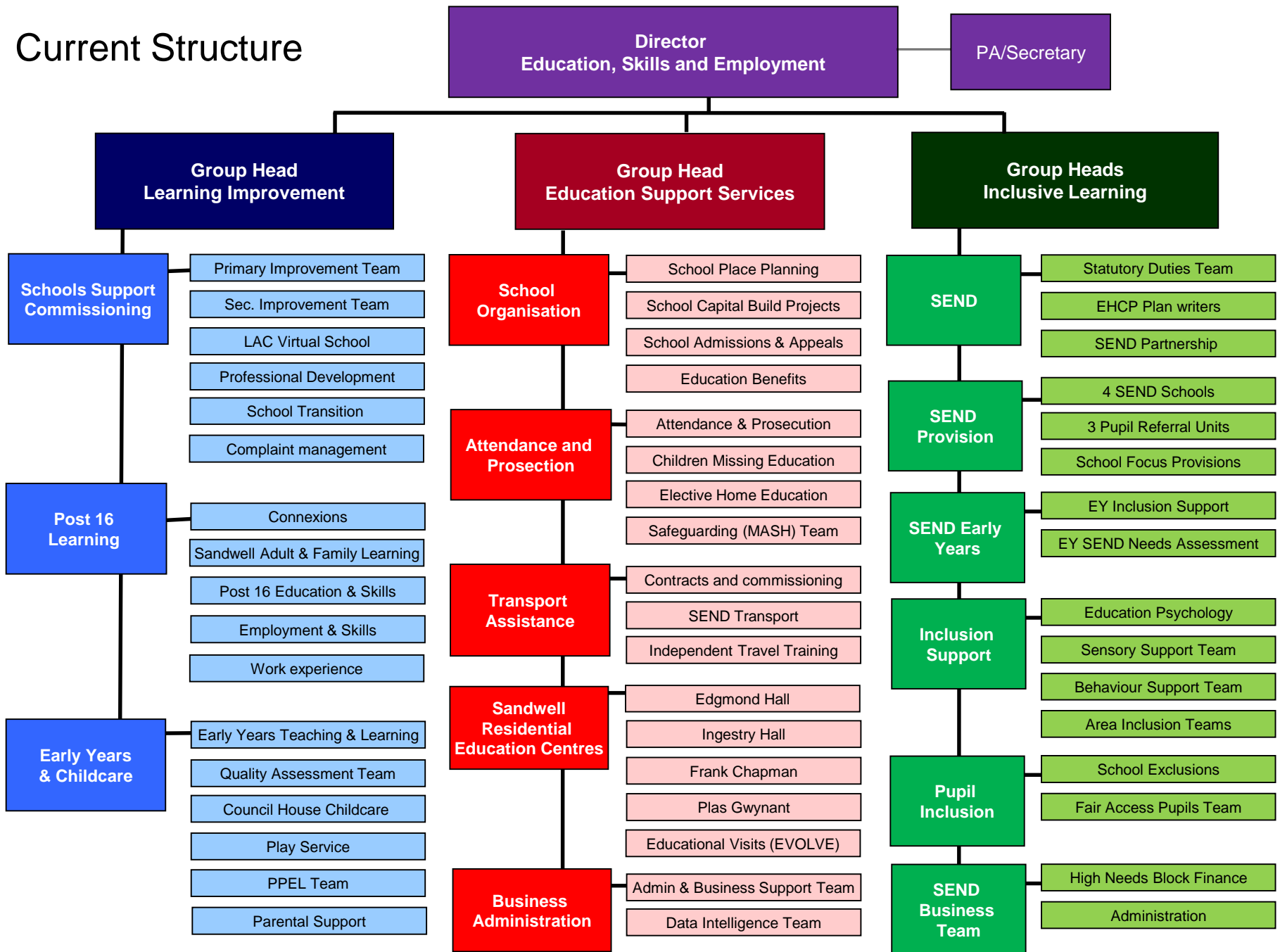


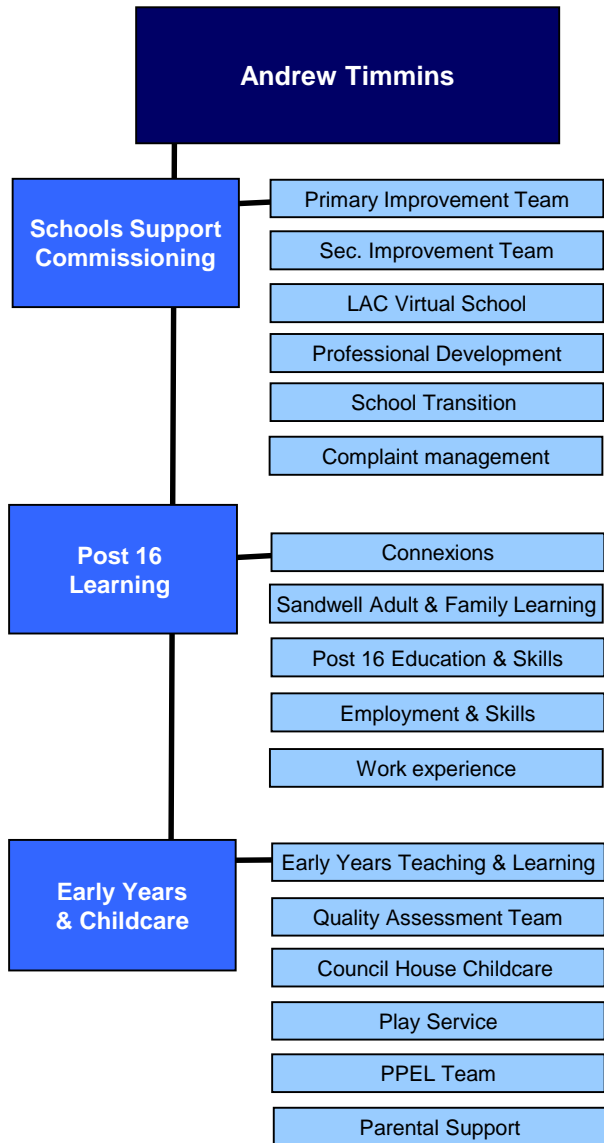
Education and Skills for Employment Services

Director: Chris Ward



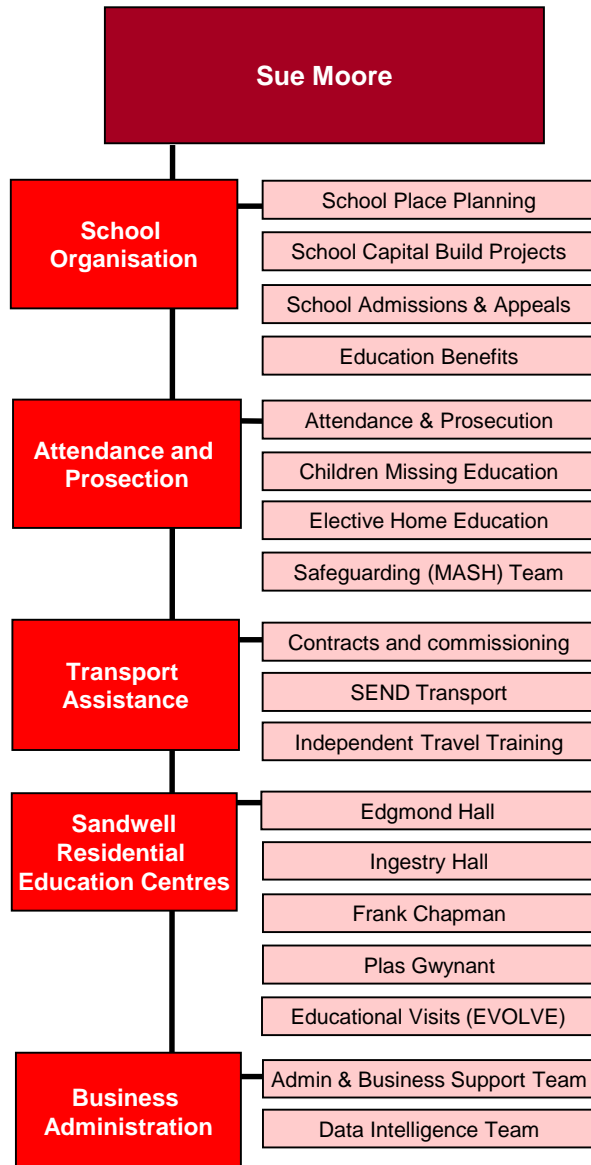
Current Structure





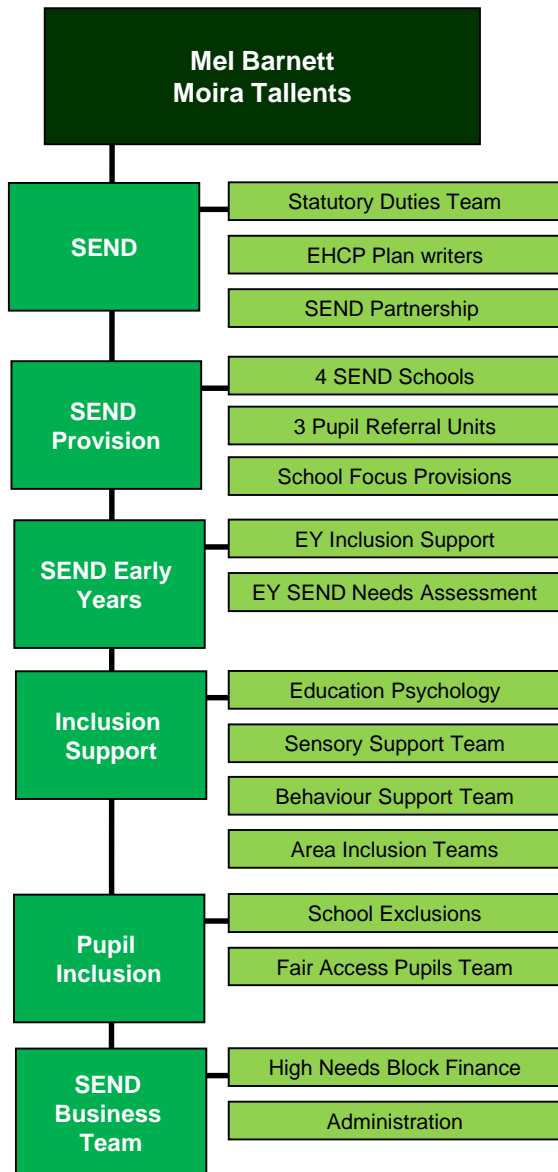
Key work

- Percentage of schools rated good or better by Ofsted
- Educational support for children in care
- Primary to secondary school transition
- Assessment Centre (STEPS) for international new arrivals
- Independent advice and guidance for career paths
- Community skills, training and learning
- Reducing NEETS, gaining apprenticeships and employment
- Checking on uptake and quality of child care and pre schools
- Performance of school Nursery and Reception classes
- Out of school hours child care and play services
- Supporting parents to help them to help the development of their children



Key work

- Working with the DfE to build sufficient good school places for children
- Manage the application and school admission process for most schools
- Bring additional funding to schools by identifying families who qualify for pupil premium and free school meals. Assist families who qualify for support with transport or school uniform
- Ensure children attend school regularly and check on those who go missing
- Support schools with safeguarding issues
- Travel support for SEND families
- Develop independence in SEND children through travel training
- Operate 4 outdoor education centres
- Management of the business systems for the directorate



Key work

- Support over 2100 young people with Education Health and Care Plans to get the support they need.
- Organise the school provision for pupils with SEND managing a £40m+ budget
- Operate teams working with health and social care professionals to identify children with SEND before they enter the schools system
- Have specialist assessment teams to work with schools and families to assist with diagnosis and needs assessment for their children with SEND.
- Assist young people who are excluded from school to find suitable alternative provision.
- Assist admissions team with children who are 'hard to place' with a school place.

Any Questions?

